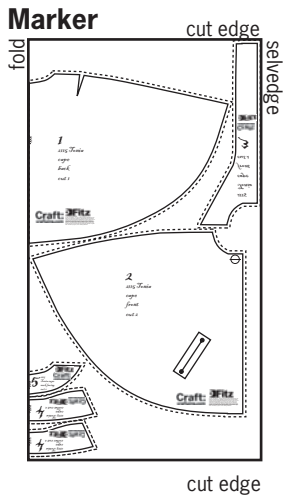




# TONIA CAPE

PERFECT FOR SPRING,  
AUTUMN, FALL OR  
WHATEVER YOU CALL  
THE IN-BETWEENSONS.

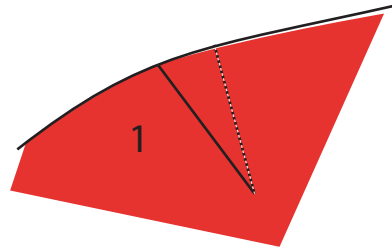


1. Check your pattern has been printed to scale by measuring the test box is 10cm x 10cm (3 6/8"). Note that a seam allowance of 10mm (1cm or 3/8") has been allowed. In this pattern, the dotted line is the cutting line and the unbroken line is the stitching line.

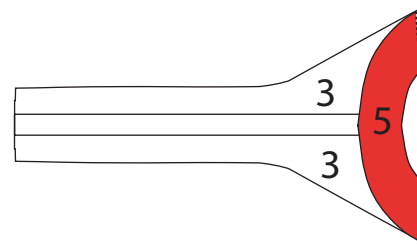
2. Cut out pattern pieces from paper sheet.

3. Layout and pin to fabric following the marker and ensuring pattern pieces are aligned with the grain. This is important and should stop things from twisting when you wear them. Cut out fabric following dotted line.

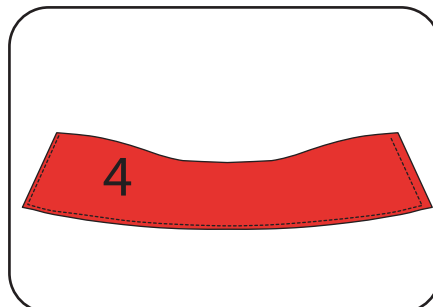
4. Stitch darts on cape back (1) and press out.



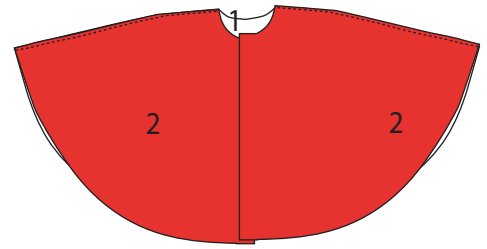
5. Stitch facings (3 & 5) together. Press out. Finish facing edges.



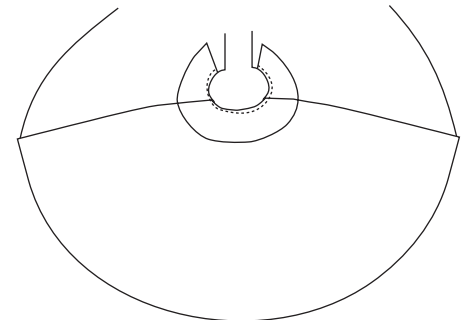
6. Iron on interfacing to one wrong side of collar (4). Put right sides of collars pieces together and stitch. Press out.



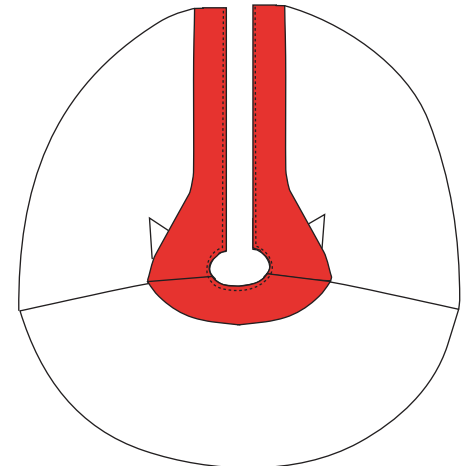
7. Stitch front pieces (2) to back (1). Press out.



7. Stitch collar (4) to right side of cape.



8. Stitch facings (3 & 5) to cape. Press out.



9. Hem cape. Press hem.

**Craft:**  
craftzine.com

**Fitz**  
For making individuals. www.fitzpatterns.com

© 2006 - Fitz patterns. All rights reserved. Designs and Patterns by Fitz Patterns are protected by Australian Copyright Laws and International Treaties. No part of this pattern/design and or its written content may be reproduced or transmitted in any form or by any means, electronic or mechanical, including photocopying, recording, or by any information storage and retrieval system without the express written consent of Fitz Patterns. Fitz Patterns grants users permission to print one hard copy for personal use only, for Fitz Patterns presents this information in good faith. No warranty is given, nor are results guaranteed.