



# EMILY 2231 GIRLIFIED T-SHIRT

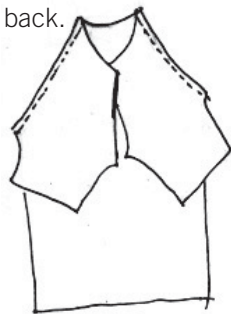
**A t-shirt designed to show off your curves.**

1. Check your pattern has been printed to scale by measuring the test box is 10cm x 10cm (3 6/8"). Note that a seam allowance of 10mm (1cm or 3/8") has been allowed. In this pattern, the dotted line is the cutting line and the unbroken line is the stitching line.

2. Cut out pattern pieces from paper sheet. Try not to use your sewing shears as paper blunts them.

3. Layout and pin to fabric ensuring pattern pieces are aligned with the grain. This is important and should stop things from twisting when you wear them. Cut out fabric following dotted line.

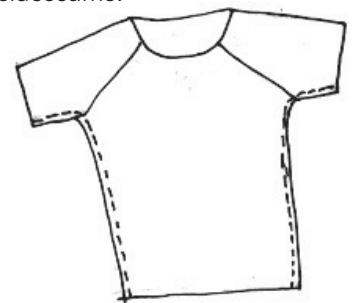
1. Stitch sleeves to back.



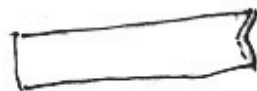
2. Stitch front to sleeves.



3. Stitch sideseams.



4. Stitch neckband seam.



5. Fold neckband and pin quarterly.



6. Identify centre back and front of shirt and then match pins of neck band with the seam at centre back. Stitch and press flat inwards. Finish edges and repeat process for sleeves if you wish. Hem tshirt.

