

HELLO & WELCOME

Punch'n'Cuddle® is what you get when you cross a beanbag with a cuddly toy & a punch bag. It invites & demands physical and expressive interaction. Whether your emotions are positive or negative, Punch'n'Cuddle will absorb them, keep you fit and turn that negative energy into positive at the same time.

It is made from bamboo & cotton mix fabrics, which are both durable and stain-resistant. A representative piece of emotional furniture that integrates playtime, fitness and emotional balance for children & adults equally.

We wish you great fun and emotionally balanced times with your new friend. As we consider all Punch'n'Cuddles and their hosts as part of our community, we would love to hear from you. Please like us on [facebook.com/punchncuddle](https://www.facebook.com/punchncuddle) or share your PnC pictures via our flickr gallery on our website [punchncuddle.com](https://www.punchncuddle.com)

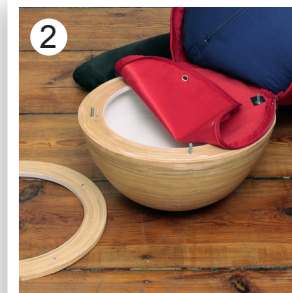


ASSEMBLY

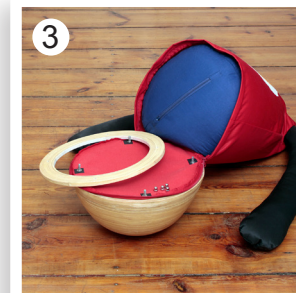
To enjoy playful & fun stress relief in no time, please follow this simple step by step guide, telling you how to assemble Punch'n'Cuddle quickly & easily.



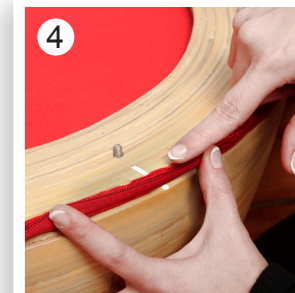
Punch'n'Cuddle consists of 3 parts: the bamboo base, the inner bag with the filling & the skin with arms. First stuff the inner bag inside the outer skin.



Place the metal rivets on the bottom of the outer skin over the screw pins on the top of the bamboo base. To do so, first remove the nuts & ring.



Then place the bamboo ring on top of the fabric. Make sure that the white line on the ring matches up with the white dot on top of the base.



Attention! As the bamboo bases are all handmade, there is only this one position of the holes in the ring to smoothly fit through the screw pins of the base.



Screw the nuts back onto the pins, so the ring is tightly attached to the base, with the fabric layer "sandwiched" between ring & base.



Make sure to pull the whole seam through to the outside of the bamboo ring, so it is not crumpled under the ring.



Then flap the body part up, so it stands straight on top of the base. Make sure it is centred and not twisted.



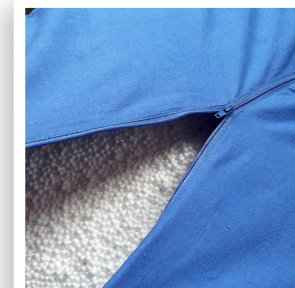
To complete the assembly, close the zipper running along the top of the base. Punch'n'Cuddle is now ready to be of service.

TAKING CARE

When used extensively, Punch'n'Cuddle might slump down a little bit over time. Make sure to plump it up every now and then, to bring the styrofoam beads up to the top again.



The outer skin with the stuffed arms attached is machine washable. Please refer to the washing label inside.



Styrofoam beads lose volume over time, so PnC might require a refill at one point. This is also available through our website.